

SureFLO 298 flowmeter

Extend your well's productive life—
at lower cost and minimal risk

Baker Hughes introduced the first downhole flow measurement system in the industry in 1993. This is the **SureFLO™ 298 flowmeter system**, which provides a complete suite of downhole information comprising of flow rate, surface gas flow rates, water cut, gas breakout indicator and real-time pressure and temperature measurements.

Since then, improvements in packaging and electronic advances have been implemented to enhance the operating life to that of a single permanent gauge system.

The system comprises of a full bore carrier which houses a venturi insert. This insert is custom designed to ensure high accuracy based on the production/injection rate and the fluid properties. The venturi insert can be designed for permanent installation or contained within a wireline string, which can be run or recovered at any time during the well completion or workover.

High accuracy quartz crystal gauges are used to measure the pressure differential between the inlet and throat sections of the venturi. The pressure gauges that can be used with SureFLO 298 include the **SureSENS™ gauge** platform.

Utilizing real time dynamic flow profiling and customized flow conditioning, measurement accuracy of better than 98% can be achieved using the SureFLO 298 flowmeter system.

The SureFLO 298 system can be deployed for liquid or gas environment. This can be used for both a producer or injector configuration. With the addition of a permanent pressure and temperature gauge above or below the SureFLO 298 carrier, a measurement of the produced fluid fraction can also be made.

Contact your Baker Hughes representative today to find out how the SureFLO 298 flowmeter can help you gain critical flow data for more informed decisions to extend your well's productive life—at lower cost and minimal risk.

Applications

- Well/zonal allocation
- Dumpflood
- Offshore/subsea
- Environments with bottomhole pressures up to 30,000 psi (2068.4 bar) and temperatures up to 347°F (175°C)

Features and benefits

- High accuracy sensor coupled with customized venturi insert
 - Enables high accuracy flow measurement
 - Real-time dynamic fluid profiling and flow regime modeling
 - Provides a larger working envelope
- Erosion resistant venturi design
 - Prolong life of flowmeter
- Wireline retrievable venturi string
 - Allows for full bore tubing access with wireline or coil tubing equipment below the SureFLO 298 carrier
- Flexible wireline retrievable venturi
 - Can be changed out if the flow regime differs from the expected conditions
- One piece carrier design
 - Enable more secure housing of gauge and communication line
- Multi-drop capability
 - Technology can be utilized in intelligent well system

Specifications

Carrier

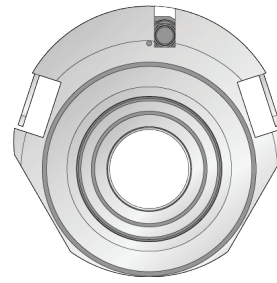
Tubing size (inches)	2 3/8 through 7
Carrier assembly material	4140 L80, 13Cr to NACE MR0175
Gauge pressure connection	Metal-to-metal seal
Lock material*	9Cr-1Mo
Tensile strength	API 5C3 compliant
Internal yield pressure	API 5C3 compliant
Collapse pressure	API 5C3 compliant
Hydro-test pressure	API 5C3 compliant

Flow performance

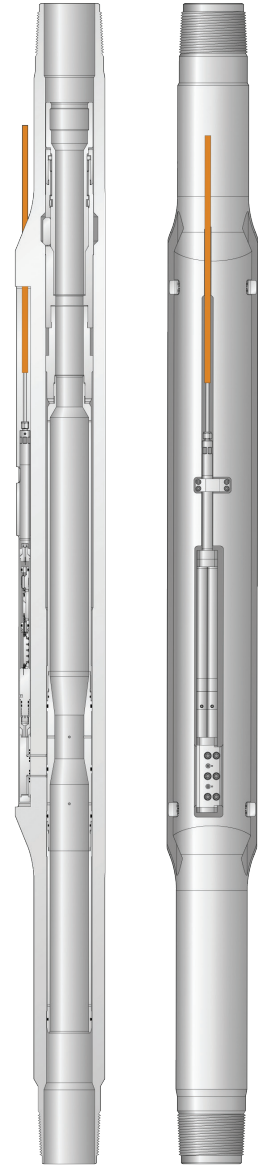
Uncertainty

Bulk flow rate	≤ ±2 relative
Density	≤ ±2 relative
Water cut	≤ ±1 absolute

*Optional materials are available. Contact your Baker Hughes representative for information.



Top view



SureFLO™ 298 flowmeter